

With Field Commander, Junxion's enterprise and government customers have remote control over single Junxion Boxes or thousands of units in the field. Simply logging in to an intuitive browser-based user interface provides access to easily and securely monitor, configure and update remote Junxion Boxes.

Field Commander was designed in collaboration with wireless carrier personnel and customers with the common goal of creating a remote management tool that is easier to deploy and manage, more flexible with more relevant features than other solutions.

The result? We urge you to compare and decide for yourself. An online demo, pricing information and specifications are available at www.junxion.com/fieldcommander. For pre-sales or support questions contact your wireless data service sales representative. You can also contact Junxion support by visiting www.junxion.com/support, or call (888) 872-5269.

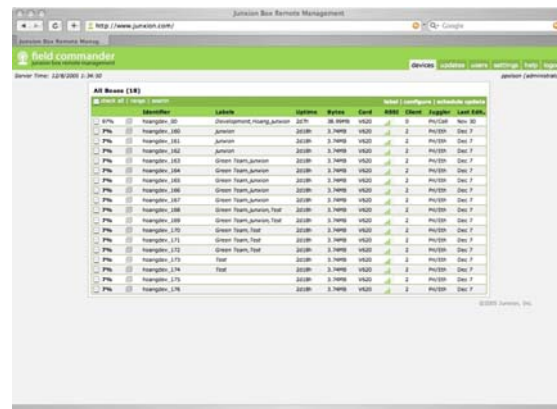
Commercial-grade Features

Comprehensive remote management. Every Junxion Box device manager feature can be configured through Field Commander from a thousand miles away. Need to update a network setting or change a security feature? Field Commander gives you complete remote control.

Tailored monitoring. Field Commander makes it easy to view single units or groups based on their status or any label you've assigned. What is the status of units with the "Route 48" label? Which units in New York have failed over to wireless WAN using WAN Juggler? Field Commander makes it easy to sort and filter for the information you need.

Anywhere, any time access. Field Commander's interface is web based, so access is easy using Internet Explorer or Firefox browsers. Manage your remote Junxion Boxes through a secure interface using a desktop, laptop or handheld while in the office or on the road.

Intuitive, easy user interface. Managers access Field Commander using common web browsers (see image).



Network security continuity. Each Junxion Box initiates all Field Commander activity. Only an authorized server can configure or manage a unit. Field Commander supports logins for multiple Administrators with full management privileges, Managers with limited privileges or Viewers with monitoring privilege only.

Bandwidth conservation. To minimize bandwidth usage when using metered wireless data service plans, Junxion Boxes can be configured to check in with the Field Commander server in increments of minutes or days. Each status check requires between 1-2KB of data.

Carrier network support. Field Commander works with standard or custom configurations offered by Junxion-supported wireless carriers, including Internet or private networks, and a range of IP address options (public, private, dynamic, or static).

Flexible hosting options. Field Commander is available through either software licensing or as a hosted application. Field Commander hosted is a quick and easy solution to deploy. Hosting is managed by third party partners at redundant, geographically diverse locations. Field Commander licensed software is available with Junxion set-up support when independent hosting is preferred.

Notably affordable. Hosted Field Commander is now an integrated feature of all Junxion Boxes, existing and new, that are using firmware version 1.5 or higher. No setup fee, no licensing fees, no servers to build/manage. For single units or thousands, hosted Field Commander is a valuable tool for cellular router deployments.

